

Accommodation

The Mediterranean Beach Hotel offers various types of accommodation ranging from Deluxe Rooms with inland and sea view to Family Rooms, Superior Rooms and Luxury Studios, making the hotel ideal for families and couples of all ages. Business travellers will appreciate the added comfort and facilities of our adults only Luxury Studios with a separate sitting area, and other added value services.

All guest rooms have been carefully designed using materials and soft furnishings in warm earthy colours complemented with partial parquet flooring. Room amenities include an en-suite bathroom, central air-conditioning/heating, direct dial telephone, radio, safe deposit box, interactive TV message system, hair dryer in the bedrooms, mini bar, flat screen LCD-TV, balcony or terrace. All floors (with the exception of level 3), restaurants, bars and the pool grounds are wheelchair accessible.

Breakdown of Accommodation

292 Rooms and Suites, including 56 Interconnecting Sea View and Inland View rooms (twin and double).

Type of accommodation	Max no. of persons that can occupy a room
102 Deluxe Inland View Rooms	3
12 Family Rooms with Inland View	4
7 Family Rooms with Pool View	4
10 Family Rooms with Sea View	4
119 Deluxe Sea View Rooms	3
4 Deluxe Family Rooms with Sea View	4
24 Superior Pool and Sea View Rooms *	2
12 Luxury Studios Pool and Sea View Rooms *	2
1 Areti Suite	2
1 Aura Presidential Suite	2

**Adults only (16 years +)*

NOTES: The maximum number of persons could be any combination of adults and children (with the exception of the Family Rooms which can accommodate a maximum number of 4 persons and can include one extra child bed and cot if required or two children's single beds). A single bed or a baby cot can be placed in all room categories except the Superior Rooms and Luxury Studios.

Deluxe Room

Area: 25 sq m overall area (excluding balcony)

Accommodates: up to 3 persons

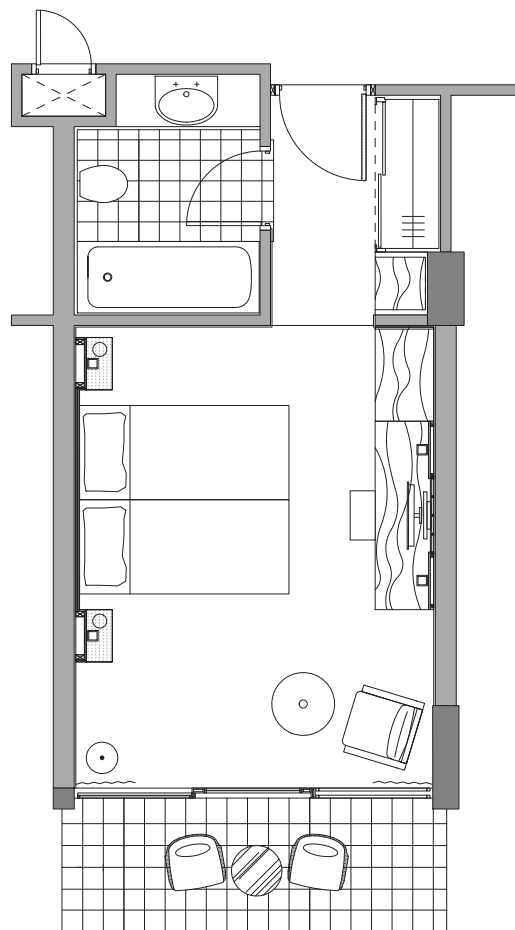
These comfortable and pleasantly decorated rooms consist of twin or double beds and reflect the Mediterranean's ambience.

Deluxe Rooms have en-suite bathrooms with bathtub and hand shower, WC, mini bar, safe deposit box, LCD-TV, a balcony and offer inland or pool and sea views.

They can accommodate up to three persons. A child's bed, or cot, can also be supplied on request, but would replace an extra bed.

Standard Facilities and Amenities

- Twin or double bed
- Balcony
- Bathroom with bathtub, hand shower and WC
- Dressing table
- Parquet and carpet flooring
- Mini bar
- Direct dial telephone with voicemail
- LCD-TV
- Safe deposit box (with hotel's compliments)
- Hairdryer
- Luxurious toiletries
- Free Wi-Fi



Family Room

Area: 37 sq m overall area (excluding terrace/balcony)

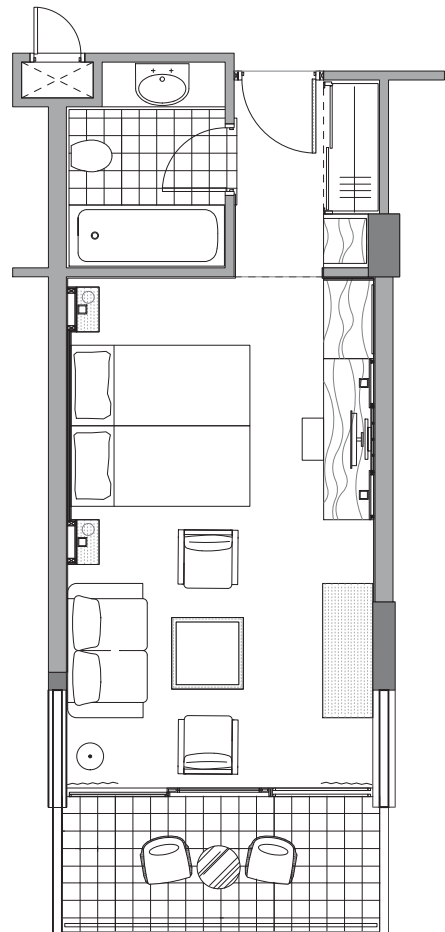
Accommodates: up to 4 persons (2 adults + 2 children)

Family Rooms have en-suite bathrooms with bathtub and hand shower, WC, mini bar, safe deposit box, LCD-TV, a separate parlour with a comfortable sitting arrangement including a pull-out bed, and a terrace or balcony. They offer views of the inland, pool, or sea and are available with parquet flooring. They are furnished with one double, or 2 twin beds, and the Family Rooms with Sea View have an in-room tea and coffee making facility.

These rooms can accommodate families with two children not yet 12 years of age.

Standard Facilities and Amenities

- Twin or double bed
- Terrace/balcony
- Bathroom with bathtub, hand shower and WC
- Dressing table
- Parquet flooring
- Mini bar
- Direct dial telephone with voicemail
- LCD-TV
- Safe deposit box (with hotel's compliments)
- Hairdryer
- Luxurious toiletries
- Free Wi-Fi



Deluxe Family Room

Area: 30.5 sq m overall area (excluding balcony)

Accommodates: up to 4 persons (2 adults + 2 children)

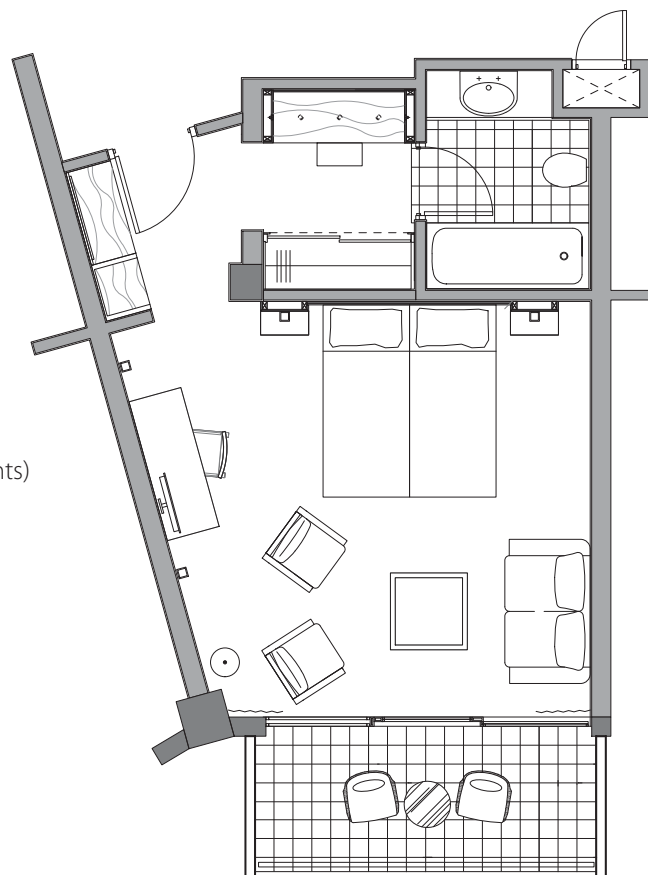
All Deluxe Family Rooms have a separate area with bunk beds for two children not yet 12 years of age. They are furnished with one double, or 2 twin beds, and have an in-room tea and coffee making facility. These rooms have an en-suite bathroom with bathtub and hand shower, WC, mini bar, safe deposit box, LCD-TV, and a separate parlour with a comfortable sitting arrangement including a balcony. They offer views of the sea and are available with parquet flooring. These rooms can accommodate families with two children.

Standard Facilities and Amenities

- Double bed
- Balcony
- Bathroom with bathtub, hand shower and WC
- Dressing table
- Parquet flooring
- Mini bar
- Direct dial telephone with voicemail
- LCD-TV
- Safe deposit box (with hotel's compliments)
- Hairdryer
- Luxurious toiletries

Guest Courtesies

- Luxurious bathrobes and slippers
- Tea and coffee making facilities
- Free Wi-Fi



Superior Room

Area: 30.5 sq m overall area (excluding balcony)

Accommodates: up to 2 persons (adults only)

All Superior Rooms are furnished with one double, or 2 twin beds, and have an in-room tea and coffee making facility, as well as a trouser press and its own private balcony overlooking the sea.

Each room has an en-suite bathroom with bathtub and hand shower, WC, mini bar, safe deposit box and a separate parlour with a comfortable sitting arrangement.

Superior Rooms can accommodate up to two persons and is available to adults only (16 years +).

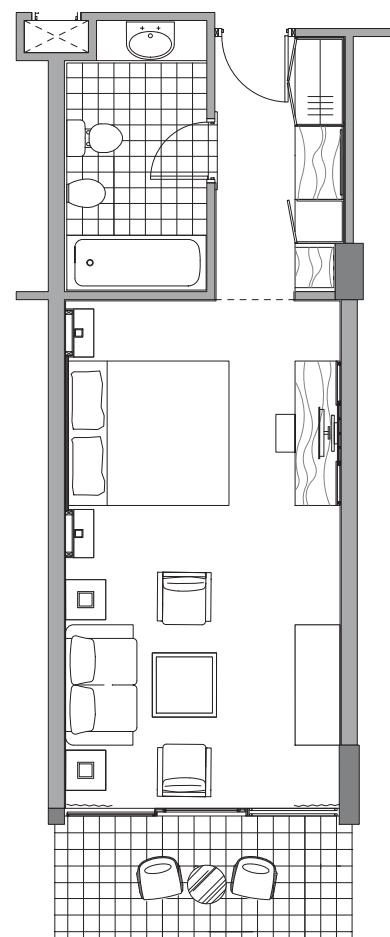
Slippers and bathrobes, as well as a range of luxurious toiletries are offered with our compliments.

Standard Facilities and Amenities

- Double bed or twin beds
- Balcony
- Bathroom with bathtub, hand shower, WC and bidet
- Dressing table
- Parquet and carpet flooring
- Mini bar
- Direct dial telephone with voicemail
- LCD-TV
- Safe deposit box (with hotel's compliments)
- Hairdryer
- Luxurious toiletries

Guest Courtesies

- Welcome drink upon check-in
- Cold towel upon check-in
- Fresh fruit in the room upon arrival
- One bottle of local wine
- One bottle of local mineral water
- Luxurious bathrobes and slippers in the room
- Tea and coffee making facility
- Flowers in the room
- Daily turn-down service
- Free Wi-Fi



Luxury Studio

Area: 41 sq m overall area (excluding balcony)

Accommodates: up to 2 persons (adults only)

These generously appointed rooms are luxuriously furnished and have a queen-sized bed, an in-room tea and coffee making facility, iPod docking station, programmable radio (AM/FM), a trouser press and a second LCD-TV in a separate spacious sitting area. They offer views of the sea.

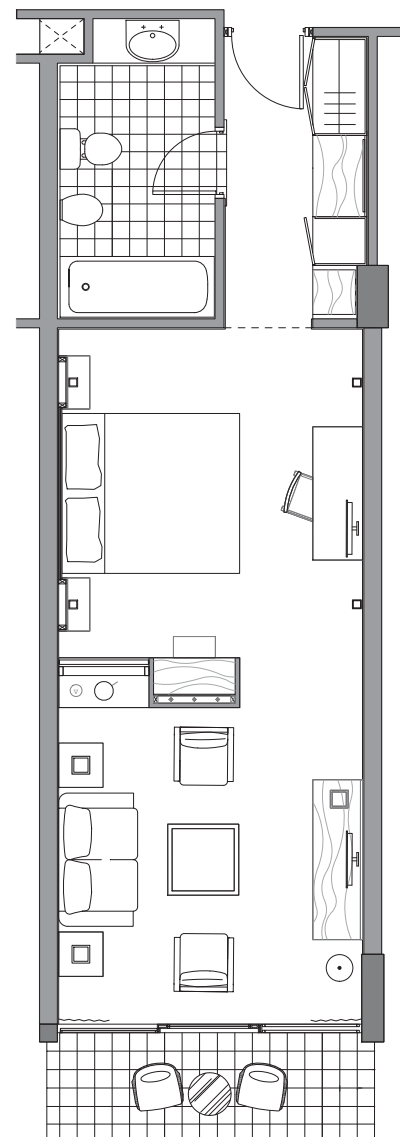
Luxury Studios have an en-suite bathroom with bathtub and hand shower, WC, mini bar and safe deposit box. Each room can accommodate up to two persons and is available to adults only (16 years +). Slippers and bathrobes, as well as a range of luxurious toiletries are offered with our compliments. Here guests can relax and enjoy their favorite music through the rooms iPod docking station in their own privacy.

Standard Facilities and Amenities

- Queen size bed
- Balcony
- Bathroom
- Dressing table
- Parquet flooring
- Mini bar
- Direct dial telephone with voicemail
- LCD-TV (2 units)
- Safe deposit box (with hotel's compliments)
- Hairdryer
- Luxurious toiletries
- Free Wi-Fi
- iPod docking station

Guest Courtesies

- Welcome drink upon check-in
- Cold towel upon check-in
- Fresh fruit in the room upon arrival
- One bottle of local wine
- One bottle of local mineral water
- Luxurious bathrobes and slippers in the room
- Tea and coffee making facility
- Flowers in the room
- Daily turn-down service



Areti Suite

Area: 75 sq m overall area (excluding balcony)

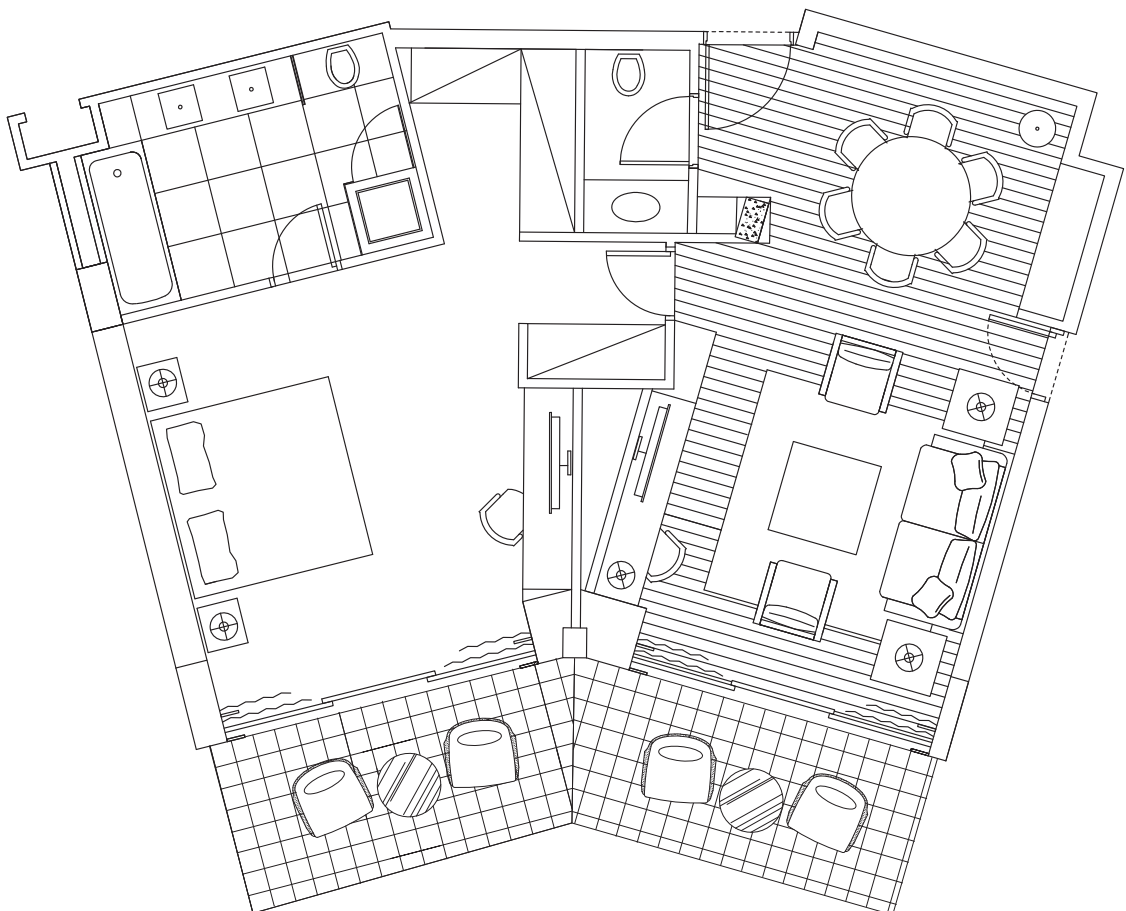
Accommodates: up to 2 persons

This light and airy suite is furnished in fashionable limed wood and pastel plaid fabrics that complement the blues and silvery green of the eucalyptus trees that can be seen through its two large windows which also offer breathtaking views of the curving breakwater beyond the pool and gardens.

The seating area in the lounge includes a couch that folds out into a second double bed as well as a dining or conference table for up to six people. The master bedroom is furnished with two queen-sized beds, features a large mirrored wardrobe outside the splendid floral-granite bathroom and has its own seating area off the balcony.

The light and relaxed atmosphere of the Areti suite makes it the perfect place for a honeymoon, a dream vacation or for less formal meetings. Coffee & tea making facilities and Wi-Fi are also available with our compliments.

Here guests can relax and enjoy their favorite music through the Suites iPod docking station in their own privacy.



Standard Facilities and Amenities

- 2 queen size beds
- Balcony
- Bathroom with bathtub, hand shower, WC and bidet
- Guest toilet
- Dining table for 6
- Dressing table
- Parquet and carpet flooring
- Mini bar
- Direct dial telephone with voicemail
- LCD-TV (2 units)
- Safe deposit box (with hotel's compliments)
- Hairdryer
- Magnifying mirror
- Luxurious toiletries
- iPod docking station

Guest Courtesies

- Welcome drink upon check-in
- Cold towel upon check-in
- Fresh fruit in the room upon arrival (replenished daily)
- A selection of petit fours in the room upon arrival (replenished daily)
- One bottle of local wine
- One bottle of local mineral water (replenished daily)
- Luxurious bathrobes and slippers in the room
- A local daily newspaper
- Tea and coffee making facility
- Flowers in the room
- Daily turn-down service
- Free Wi-Fi

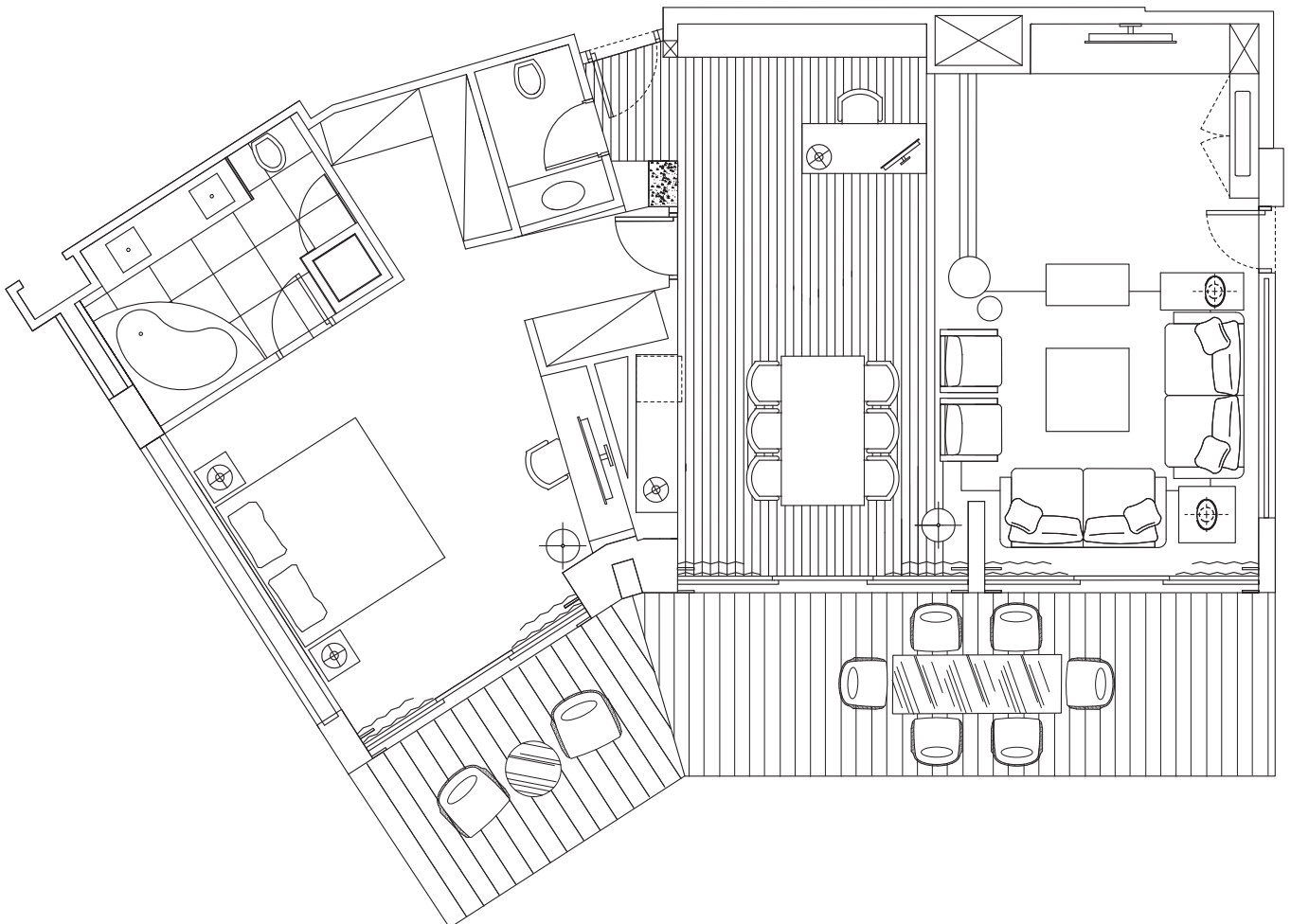
Aura Presidential Suite

Area: 99.5 sq m (1 bedroom), 124 sq m (2 bedrooms) overall area (excluding balcony)

Accommodates: up to 2 persons

The Aura Suite has recently been upgraded. New features and amenities make up for an impeccable stay. The Suite boasts a heavenly master bedroom equipped with an ultra-comfortable bed for quality sleep, a 55" LCD-TV and a fully automated lighting selection theme. The living room comprises of a seating and dining area for utmost privacy. A separate bedroom adjacent to the Aura can also accommodate for more guests.

New design elements include solid parquet flooring and wooden panelling, features that create a distinctive, classic and earthy atmosphere. A smart lighting control system allows you to adapt to your needs at any time of the day. A touch screen computer, complimentary internet with high speed access and a Beoplay A8 offer greater comfort and ease of access.



Standard Facilities and Amenities

- 1 queen sized bed
- Balcony
- Bathroom with hand shower, Jacuzzi, WC, bidet
- Dressing table
- Marble flooring and carpet
- Mini bar
- Direct dial telephone with voicemail
- LCD-TV (2 units)
- iPod docking station
- Safe deposit box (with hotel's compliments)
- Hairdryer
- Magnifying mirror
- Guest toilet
- Luxurious toiletries
- Dining table for 6

Guest Courtesies

- Welcome drink upon check-in
- Cold towel upon check-in
- Fresh fruit in the room upon arrival (replenished daily)
- A selection of petit fours in the room upon arrival (replenished daily)
- One bottle of local wine
- One bottle of local mineral water (replenished daily)
- Luxurious bathrobes and slippers in the room
- A local daily newspaper
- Tea and coffee making facility
- Flowers in the room
- Daily turn-down service
- Free Wi-Fi