



ACCOMMODATION

Family Cyprian Maisonettes

Area: 53 sq m overall area (*excluding balcony*)

Accommodates: up to 3 adults, or 2 adults and 2 children

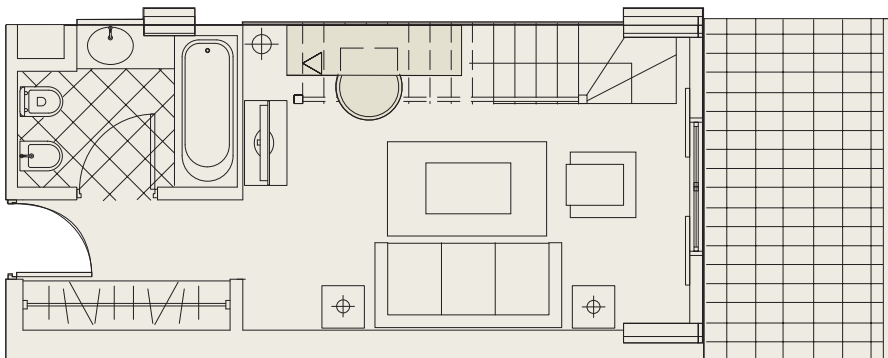
Traditional to Cyprus, these 23 Family Cyprian Maisonettes incorporate a double height sitting room overlooked by a mezzanine sleeping gallery, separate shower room and walk-in wardrobe which are located over the entrance and bathroom. Rooms are designed to a high standard in a local style with rustic terracotta tiles and ceilings of timber and bamboo. Impressive arched patio doors overlook the royal gardens from one side (12 units) or have their own garden on the other (11 units).

Standard Facilities and Amenities

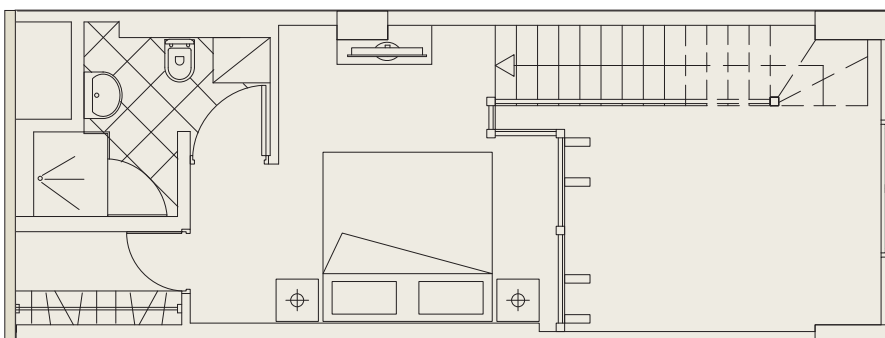
- ♦ Twin or double beds
- ♦ Terrace or garden
- ♦ Marble bathroom with bathtub, hand shower, WC, bidet and magnifying mirror in the ground floor level
- ♦ Marble bathroom with walk-in shower, WC, bidet and magnifying mirror in the upper floor level
- ♦ Marble and parquet flooring
- ♦ Mini Bar
- ♦ Direct dial telephone with voicemail
- ♦ LCD-TV (2 units) with satellite channels
- ♦ Safe deposit box (*with hotel's compliments*)
- ♦ Hairdryer
- ♦ Luxurious toiletries
- ♦ Walk-in wardrobe
- ♦ Coffee and tea making facilities (*replenished daily*)
- ♦ Wireless Internet access (*with hotel's compliments*)
- ♦ iPod, MP3 player docking station

Guest Courtesies

- ♦ Complimentary welcome drink upon arrival
- ♦ Luxurious bathrobes and slippers
- ♦ Fresh fruit display and mineral water upon arrival



Lower Level



Upper Level

